

SC-KD4

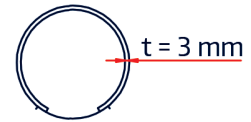
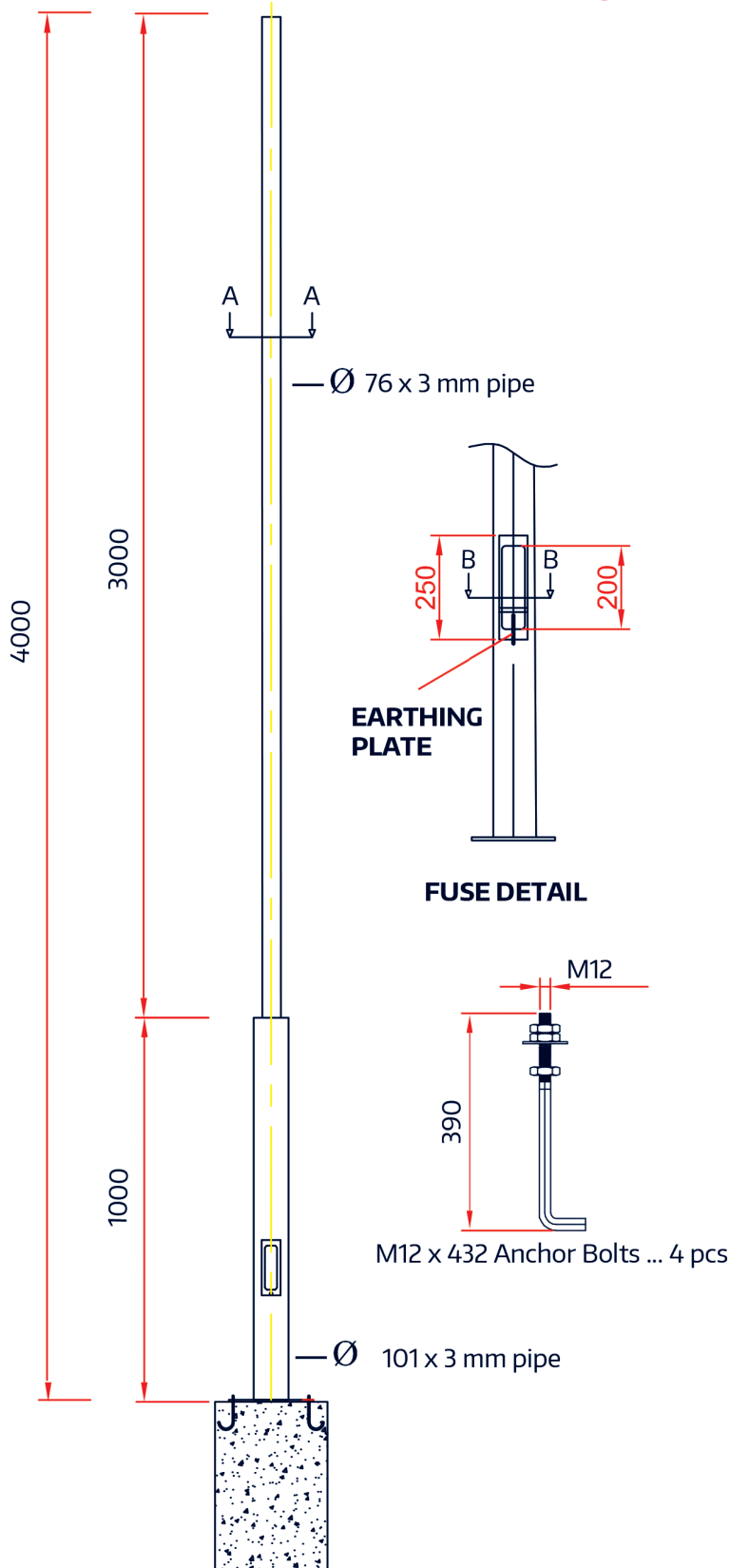
**4 METER
HOT DIP**

GALVANIZED CAMERA POLE

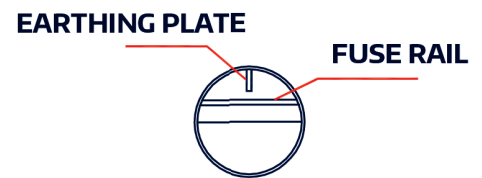


Technical Specifications

Lower Body Diameter	: 101 mm
Lower Body Length	: 100 cm
Upper Body Diameter	: 76 mm
Upper Body Length	: 3 m
Body Thickness	: 3 mm
Wind Durability	: 90 km/h
Base Plate	: 8 mm x 230 mm x 230 mm
Pole foundation	: 3 x M12 Anchor - Anchor Vertical Height : 390 mm - Anchor Total Length : 432 mm



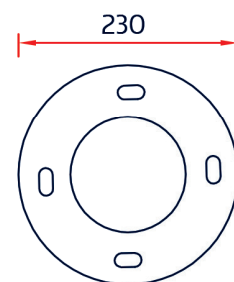
A - A Section



B - B Section



EARTHING PLATE



BASE PLATE

8 mm x 230 x 230